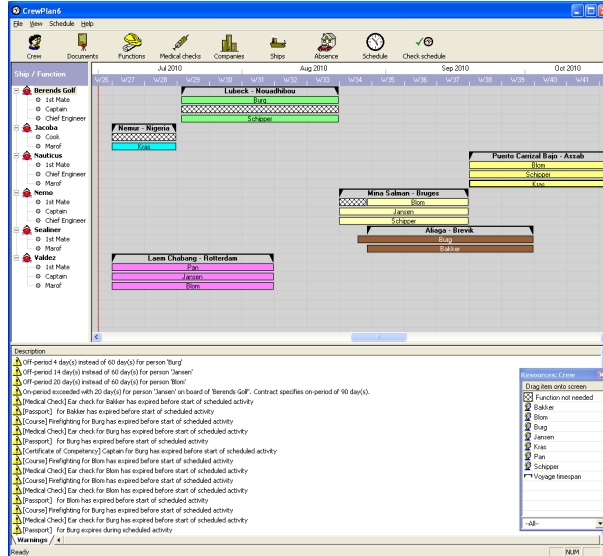


CrewPlan6 — HMC's crew planning application

2010, third quarter
Release date: 02/07/2010

Crew and personnel planning does not get any easier than with CrewPlan6. CrewPlan6 is developed by HMC engineers to easily plan and check your crew schedule.

By simply using the drag and drop technology to enter crew members and plan trips, on and off time, manage medical checks, certificates and legal document dates you have a clear overview of all activities containing all your ships. CrewPlan6 automatically warns you for all kinds of dangers and planning faults, such as double scheduled crew members, and empty spots, insufficient certification, expired medical checks, and legal documents etc. This check is automatically performed when the operator presses the "check schedule" button. All inconsistencies will show at the bottom of the screen, enabling quick and efficient adjustment and prompt action. Click on the picture to see the clear schedule overview by means of Gantt chart with both a person function view and a ship function view.



Click picture to enlarge

[More Details](#)

"CrewPlan6 allows you to check your crew schedule at a glance"

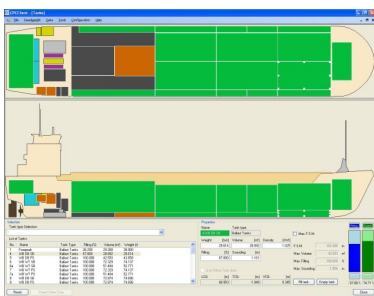
CPC 2.0 — 2010 stability & longitudinal strength software

HMC is in the final stage of developing the 2010 ship loading computer CPC 2.0. The first orders are about to be delivered.

Key goals in the development were to make load planning optimal for all sorts of configurations and to create a modern graphics lay-out. CPC 2.0 makes stability calculations and longitudinal strength calculations including shear force, bending moment and torque. The program is server based and has an option to import and export small files with hydrostatic data. To enhance ship to shore communication. HMC increased the program's ability to adjust the program to specific customer needs as no ship and no owner nor his needs and wishes are alike.

Background

CPC 2.0 is based on the previous CPC 1.9 of which over 1500 were delivered to multi-purpose, container and Ro-Ro vessels around the globe. This software is a combination of 30 years research and development for shipping companies and shipyards by HMC.



Click picture to enlarge

Standards & regulations

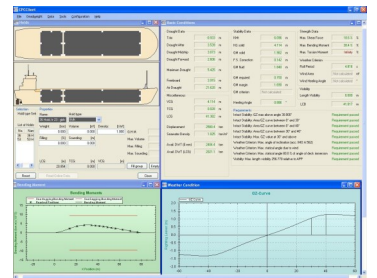
All calculations are completely validated through the international regulations regarding safety and transit measures and have full class and ship specific approval. All stability calculations are according to relevant IMO regulations.

Features

- User friendly interface
- Server based software
- Easy input of container, break bulk, grain and project cargo
- Increased adjustability to specific needs
- Transfer hydrostatic information ship to shore for support and back up purposes
- Observed draft correction

[More Details](#)

"CPC 2.0 is as user friendly as a loading computer gets and makes work aboard efficient and less time consuming"



Click picture to enlarge

New website on the way

It has been a busy time for HMC the past couple of years. So busy that we neglected our website up to a point where we truly outgrew our internet profile. Finally, that is about to change, a brand new website, fully representing HMC anno 2010 is on its way.

The new website provides easy access to two separate divisions within HMC: Marine Services (MS) and Maritime Business Applications (MBA). Frequently asked questions (FAQ) is improved and extended, partners will be able to login on the new website for quick responds on their problems or questions regarding HMC products and the entire website will be built to be of service to you, being our valued customer.



HMC and wind energy

With over 20 years of transport engineering experience HMC is able to make transportation, installation and exploitation of windmills safer and more efficient.

Since the very beginning of the offshore wind energy in 2006 HMC was involved in wind energy projects. The first time was for logistic center IJmuiden where HMC was asked to determine trafficking flows, holdup as result of weather conditions, estimation for suitable harbor facility and transshipment capacity. Following this project were more risk analysis and engineering and statistical questions. HMC took account for several aspects of the short sea shipping transportation of wind turbine parts for the Kugelbake, and delivered contra expertise regarding the risks of windmill parks at Den Haag, Katwijk and IJmuiden, Scheveningen Buiten, West Rijn, Breeveertien and Q10 on the North Sea.

Besides these contra expertise projects HMC produces operational manuals for self lifting rigs and measures strength and stability of these legs.



[More Details](#)

To unsubscribe, please [click here](#)